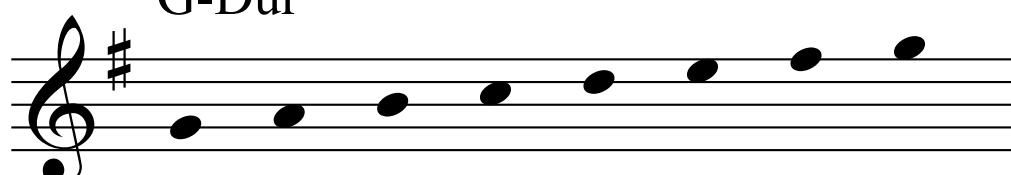


Schreibe die gesuchten Tonleitern

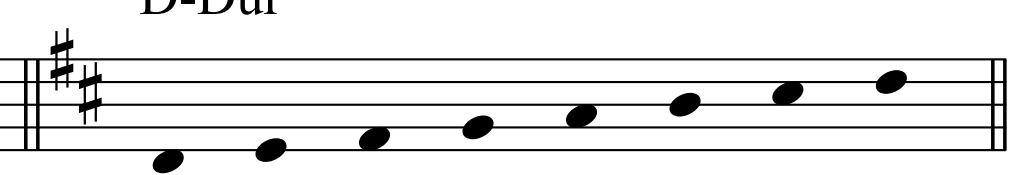
Lösung

Schreibe die **Vorzeichen** und die Noten über eine Oktave.

G-Dur

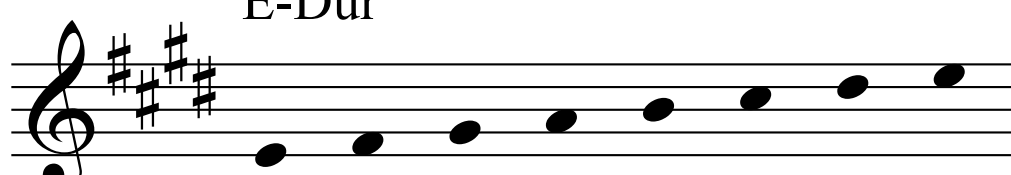


D-Dur

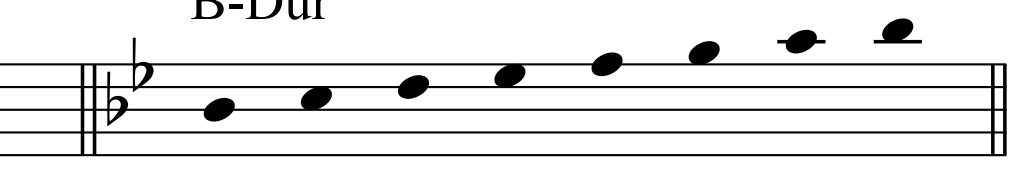


The first row shows two musical staves. The left staff is for G-Dur, starting with a treble clef and a key signature of one sharp (F#). The notes are G, A, B, C, D, E, F#, G. The right staff is for D-Dur, starting with a treble clef and a key signature of two sharps (F#, C#). The notes are D, E, F#, G, A, B, C#, D.

E-Dur

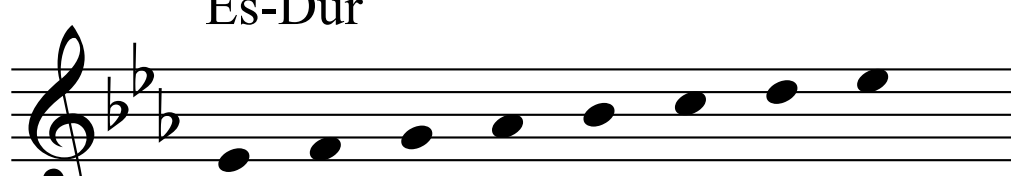


B-Dur

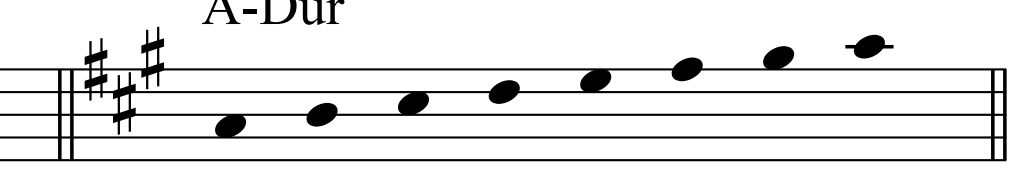


The second row shows two musical staves. The left staff is for E-Dur, starting with a treble clef and a key signature of three sharps (F#, C#, G#). The notes are E, F#, G#, A, B, C, D, E. The right staff is for B-Dur, starting with a treble clef and a key signature of two sharps (F#, C#). The notes are B, C, D, E, F#, G, A, B.

Es-Dur

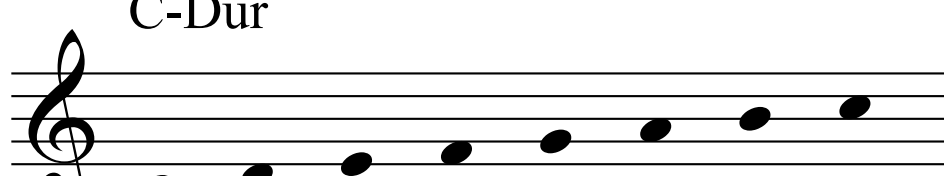


A-Dur

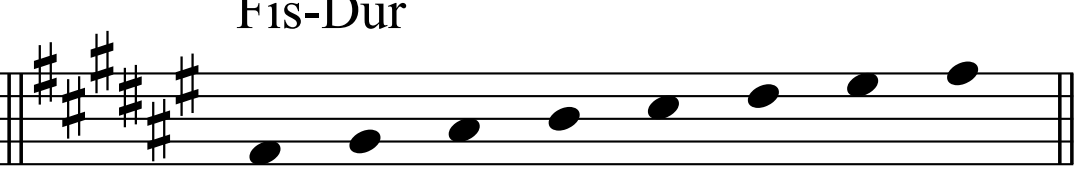


The third row shows two musical staves. The left staff is for Es-Dur, starting with a treble clef and a key signature of two flats (Bb, Eb). The notes are E, F, G, A, B, C, D, E. The right staff is for A-Dur, starting with a treble clef and a key signature of three sharps (F#, C#, G#). The notes are A, B, C, D, E, F#, G#, A.

C-Dur



Fis-Dur

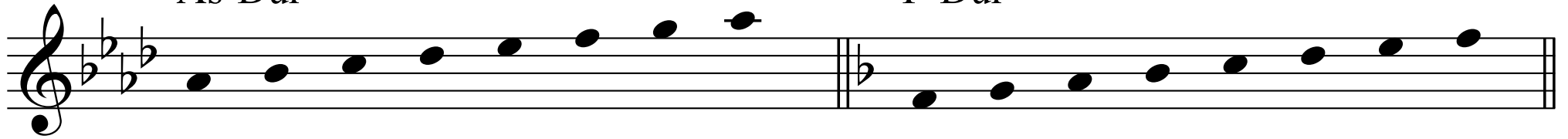


The fourth row shows two musical staves. The left staff is for C-Dur, starting with a treble clef and no sharps or flats. The notes are C, D, E, F, G, A, B, C. The right staff is for Fis-Dur, starting with a treble clef and a key signature of four sharps (F#, C#, G#, D#). The notes are F#, G#, A, B, C, D, E, F#.

2

As-Dur

F-Dur



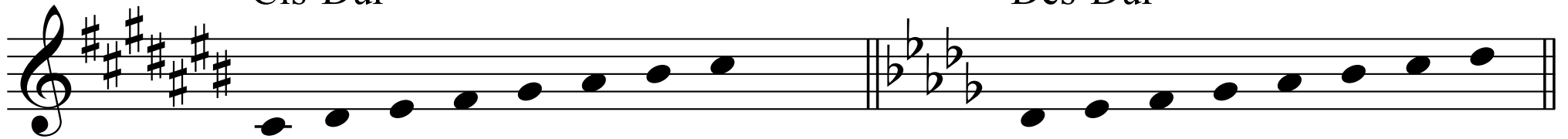
Ges-Dur

H-Dur



Cis-Dur

Des-Dur



Ces-Dur

